

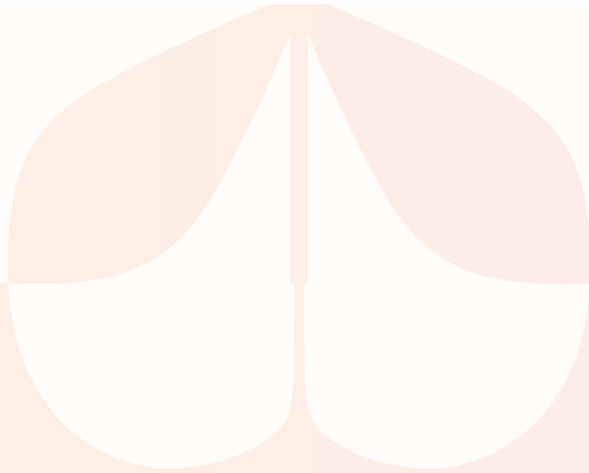


# K'aute Pasifika

PACIFIC. NEVER PASSIVE.



## ANNUAL REPORT



*We work with our communities toward a shared vision of improved health and wellbeing. We are a charitable trust based in Hamilton and provide health, education, employment and social services to all individuals, families and communities, regardless of ethnicity.*

## **OUR VISION**

Thriving Pacific communities

## **OUR PURPOSE**

To improve the holistic wellbeing of Pacific communities

## **OUR VALUES**

-  Connectedness
-  Courage
-  Uniqueness
-  Empowerment
-  Integrity
-  Innovation







## CONTENTS

Chair's report .....	4
Chief Executives' report.....	5
Our board .....	6
Our team.....	6
K'aute Pasifika snapshot .....	7
Our services.....	8
Our COVID-19 response.....	10
Our stories .....	11
Our future .....	13
Thank you.....	14
Financial report .....	15



## CHAIR'S REPORT

It would be remiss of me to ignore the very real impact of COVID-19. I acknowledge the ever-increasing involvement and engagement of our Board during the past 12 months.

Your Board has been very supportive and active in assisting management to remain focused on the work of K'aute Pasifika, and in very real ways by being active through Levels 4 and 3 in assisting Pacific communities.

The sense of purpose, professionalism and commitment from all involved has been very evident and supportive of me in my role as Chairperson. Your Board, with much external support, continues to make significant progress in supporting the Pacific community. The profile of K'aute Pasifika has never been greater. A wonderful credit to all involved.

The Board acknowledges the year has been very challenging, especially for the Chief Executive Officer, Rachel Karalus, the General Manager, Sarah Halliday and staff. The very professional work of all is acknowledged by the Board.

This is a time of significant developments for K'aute Hamilton City Council agreeing unanimously to endorse the lease of Hinemoa Park for the establishment of a Pan Pacific Community Hub. This is a major decision which leads itself into much more work before implementation.

Our gratitude for the significant support from Trust Waikato. To the CEO, Dennis Turton and staff thank you. We are also appreciative of the other funders who have given us both assistance and a real sense of belief in our work. The Ministry of Education for funding the Early Learning Centre, the grant from the Department of Internal Affairs, Ministry of Youth Development, Hamilton City Council, Len Reynolds Trust, WEL Energy Trust, and DV Bryant Trust.

Rachel Karalus will speak about the financials and grants and I am delighted that K'aute Pasifika is in a sound financial position.



To whom we owe much for such a positive 2020, thank you. I have mentioned individuals and organisations above and I wish to conclude in thanking our Aere Tai partners for their wonderful work. Also the Hamilton City Councillors for their support of the site for the Pan Pasifika community hub.

To Hamilton City Council staff – thank you and we look forward to working with you in the years ahead. The City is well served with many caring and capable professionals.

Wintec, our partnership is invaluable for the opportunities and growth of our Pacific people, especially our youth. Thank you for your work with K'aute Pasifika. We look forward to the partnership continuing to grow.

In conclusion, 2020 has been a year of extreme demands and positive responses. I'm very proud of our governance and have been extremely well supported by our CEO in achieving many positive outcomes for the community.

2021 we are ready.

Edgar Wilson  
Chair



# CHIEF EXECUTIVE'S REPORT

Talofa lava, Ni Sa Bula Vinaka, Kia Orana, Malo e Lelei, Malo Ni, Fakalofa Lahi Atu, Mauri, Aloha, Namaste, Tena Koutou Katoa and warm pacific greetings to you all.

This year has been rather surreal given the impact of the measles outbreak in Samoa in 2019 and then COVID-19 in 2020.

On 24 March 2020, New Zealand moved into lockdown level 3 and 48 hours later, we went into level four, full lock down. During that period our funders allowed us to redeploy resource to meet the community need. This demonstrated that high trust models of partnership do work and we were grateful for the confidence and trust our funders placed in us. Before the first lockdown took effect, we had formed strategic relationships with Gilmours, Fresh Choice Te Awamutu and New World Rototuna to ensure a consistent supply of food and other household essentials were available for distribution to our families. We were fortunate to be offered suitable bases from which to operate – St John's Methodist Church in Hamilton East and later Enderley Community Centre (fa'afetai tele lava to the Church and Hamilton City Council for use of these spaces). Our partnerships with St Vincent de Paul, Ultrafast Fibre, Civtec, NZ Police, The Department of Corrections and Neville Kane Pharmacy were very much a highlight for us because it spoke to the values of these organisations, and an agility to just get on with what needed to be done.

A similar impact was experienced as a result of the recent resurgence in COVID-19 cases but this time it was closer to home. We did everything we could to support our brothers and sisters in Tokoroa as well as the Waikato District Health Board in trying to ensure good testing levels across the region for our Pacific peoples and other vulnerable groups.

While there were COVID-19 difficulties to be navigated, perversely there has been increased opportunity for K'aute Pasifika. Since the outset of the first lockdown, our numbers have grown from approximately 20 FTE to 39 FTE. It is not so much the personnel growth that is to be remarked on as the new areas which we are being trusted to grow into – housing support, employment and training support services, an expanded mental health service, COVID-19



response initiatives and the Affordable Energy for All programme (a programme supported by Wel Energy Trust).

The Pan Pacific Community Hub project continues to move forward with Hamilton City Council voting unanimously in February this year to change the designation of the land to enable the project to proceed at Hinemoa Park and to enter into an agreement to lease with K'aute Pasifika. More recently the Council again voted unanimously in support of the project and for the granting of a 30 year lease with K'aute Pasifika despite a shortfall in funding. We aim to begin construction of the early learning centre and refurbishment of the Bowling Club at Hinemoa Park in December 2020.

In July 2020, we hosted – with the wonderful support of one of our most important stakeholders, Wintec, over 250 community members at a fono which was dedicated to maintaining the voice of the community in the development of the Hub. It was wonderful to see children, young people, church leaders, community leaders and stakeholder representation at the fono. We have always said that the Hub project is about bringing people together – people from all backgrounds, Pacific or otherwise. And even though we do not yet have the buildings, the project is certainly already meeting one of its key objectives – The bringing together of people.

From a financial perspective, K'aute Pasifika has had a strong year with a surplus which is being put towards the Hub project and the development of accessible health and early learning services. Our financial details are available in this report.

Tangata Pasifika – United we will achieve. Ia soifua ia ma ia manuia.

Ia soifua ia ma ia manuia

Leaupepe Rachel Karalus  
Chief Executive Officer





## OUR BOARD



Edgar Wilson  
Chair, European



Vaine Wichman  
Cook Island



Teuila Maggof  
Samoan



Sharleen Nathan  
Cook Island



Danfung Teresa Binoka  
Kiribati



Desiree Ratima  
Samoan



Julian Sing  
Fijian



Carissa McKay  
Niuean



Ofa Pouono  
Tongan



Dean Viviani  
Niuean

## OUR TEAM

We have a skilled team of 39 people including qualified nurses, social workers, counsellors, educators, community health workers, community health promoter, Whānau ora navigators, community finance specialists, finance and administration.

### Our management team

**Sarah Halliday**, Operations Manager

**Silaumea Petersen**, Social Service & Education Team Leader

**Henry Tuip'ea**, Employment Services Team Leader

**Rachel Karalus**, Chief Executive Officer

**Epoki Veituna**, Finance Manager

**Barbara Bilcich**, Whānau Ora Team Leader/Communications Manager

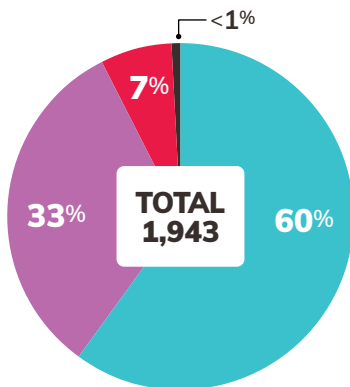
**Terereawai Kipa-Kearns**, Registered Nurse, Health Team Leader





# K'AUTE PASIFIKA SNAPSHOT

## Clients we've supported



Health	1166
Social	633
Employment	133
Education	11

**449**

Total number of flu  
vaccinations and  
immunisations

**126**

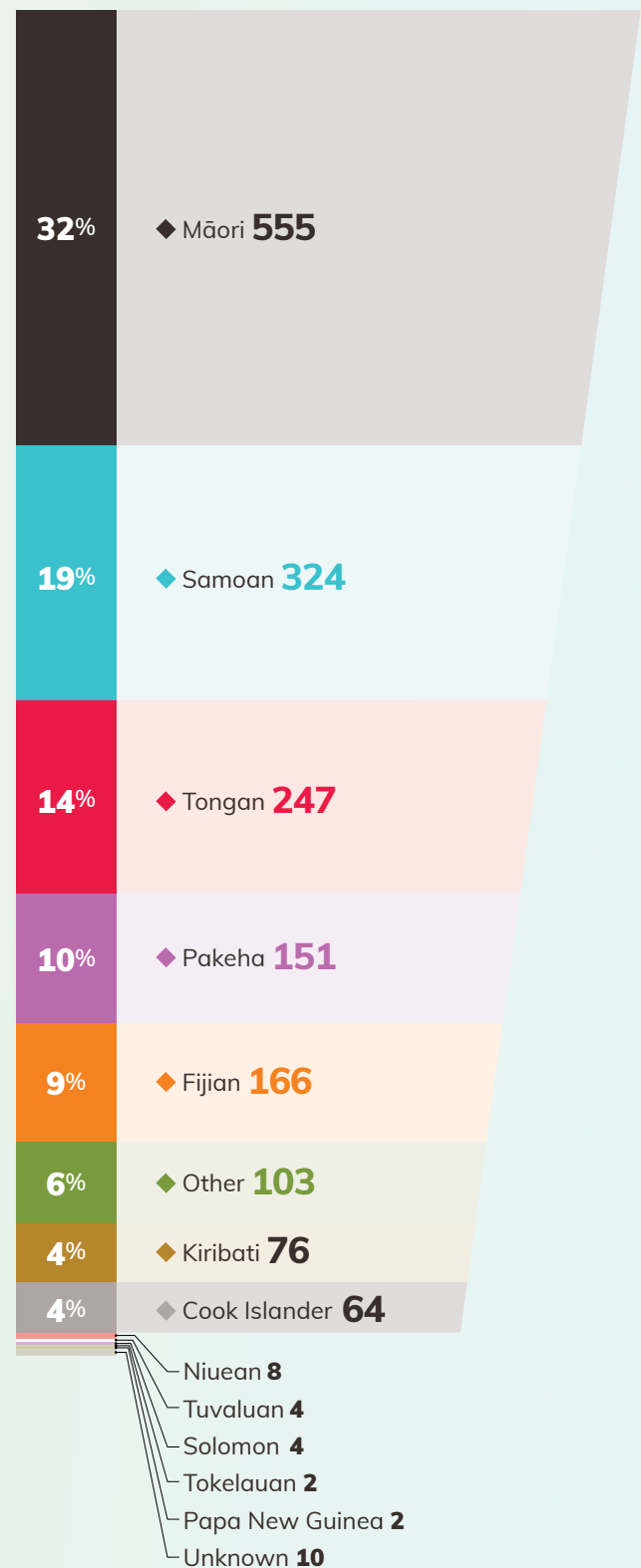
Total number of  
families engaged  
in Whānau Ora

## Social Return on Investment

= **\$36.70** for every **\$1** invested.

## Our clients by ethnicity

Total 1720







## OUR SERVICES



### Health

#### **B4 Schools Check**

Free check for four year olds, to make sure your child is healthy and can learn well at school.

#### **Cervical screening**

#### **Mental Health and Addictions**

We provide one-on-one clinical support for people of all ages, who experience mental distress and addiction issues. We work with individuals, groups, families young people and the elderly.

#### **Community Day programme**

We support and empower people to lead active lives and continue to participate in their communities.

#### **Chronic disease**

We provide ongoing care and support for people who have chronic diseases, including heart disease, diabetes, respiratory disease and cancer.

#### **Immunisations**

We provide free immunisations. Immunising your children at the recommended times is the best way to protect them against serious diseases.

#### **Sexual and reproductive health promotion**

Education and promotion for Pacific young people aged 16-24 about sexual and reproductive health.

#### **Smoking cessation**

Our qualified smoking cessation coach supports people to quit smoking, providing support, free nicotine patches, gum and lozenges.

#### **Sore throat promotion**

We promote early detection and support families to seek treatment for sore throat.

#### **Well Child**

We provide a specialised Well Child service to families with children aged under 5, providing health and development assessments.

#### **Pacific Home Based Support Services**

We support and empower families to access services and improve their health and wellbeing.





## Social

### Social services

We provide relationship services and family violence programmes and advocate for families to improve their social wellbeing.

### Integrated safety response

Working with other local organisations we provide an integrated safety response to family violence in the Waikato.

### Whānau Ora

We empower our families to achieve their goals and become independent.

### Gambling harm prevention

Our counsellor provides one-on-one support and help for people who are concerned about their own or a family member's gambling.

### Whānau Resilience

We work with families to support and strengthen them to live free from violence.

### Housing Navigation

We provide community based housing navigation support for individuals, families and children who are at risk due to their unstable living situation.

### Affordable Energy for All

We work to reduce energy hardship in the community. Ensuring access to affordable, reliable, sustainable and modern energy for all.



## Education

### Pan Pacific playgroup

We provide a weekly parent-led early childhood playgroup for children and their families, focusing on holistic wellbeing, cultural and spiritual values.

### Talonao Ako

We support Pacific parents, families and communities to champion their children's learning, and provide academic support for secondary and primary students.



## Employment

### Tupu Aotearoa

We help Pacific young people aged 15-59 find employment, complete further training or study by connecting them with support.

### Niu YOU

We support Pacific and Māori Work and Income clients aged 18-64 into employment by providing skills, education and employment opportunities.





# OUR COVID-19 RESPONSE

## 1300 free care packages for Waikato families

Working together with local food suppliers, community funders, corporate and public sector volunteers meant that during lockdown, vulnerable families received much needed care packages.

*The reality for many families in our community is that they needed immediate help. The families we support were already vulnerable. COVID-19 has intensified their vulnerability and added more pressure. Providing free care packages was one way we helped reduce the pressures our families were experiencing.*

*We could not do this alone. Thanks to the tremendous collective effort from our funders, food suppliers and volunteers.*

We acknowledge the contribution of the Hamilton City Council, St John's Methodist Church and the Enderley Community Centre who provided us with the space to prepare the packages.

Working with local food suppliers including Gilmours enabled us to meet the high demand and ensured food was available. Dayne Riddle, general manager of Gilmours Te Rapa said "We need more people like your team helping and putting themselves forward to help those in need. We will do whatever we can to help those in need during these troubling times."



“ Ofa lahi atu K'aute Pasifika. Just overwhelmed with the leadership, courage and commitment you have for our families. God Bless.”

Volunteers from organisations including UltraFast Fibre, Department of Corrections, Civtec and the NZ Police alongside our staff worked tirelessly, packing and delivering care packages to families in the Waikato region including Huntly and Ngaruawahia.

John Hanna, CEO of Hamilton-based Ultrafast Fibre said "Assisting our community at a time like this is not a decision for us, it is simply a reflex. We are proud to support the great work that K'aute Pasifika continually do for our communities – our recovery from events like this will always build up from the basics."

"We received requests for help from a broad cross-section of the community including elderly people living on their own and unable to go to the supermarket, solo mothers living in motels, and people who have lost their jobs or had their hours reduced.

Funding for the food packages was been provided thanks to the generosity of Pasifika Futures Ltd, Trust Waikato, Hamilton City Council, Wel Energy Trust & DV Bryant Trust.





“ The service is beautiful  
our family received a kai  
package and it was amazing  
the kids are so happy with  
the addition of activities  
provided by your service.”







# OUR STORIES

## Help for Tongan Mum stranded in NZ by COVID-19

In January 2020, 27 year-old Ofa and her husband travelled to Hamilton to look after her terminally ill sister. Little did they know they would not be able to return to Tonga as COVID-19 put NZ into lockdown and closed its borders.

Here on a visitor's visa Ofa became pregnant with her first child. Ofa met with a midwife during her pregnancy and was ineligible to receive any government funding for her maternity care. By the time she was ready to give birth in July, she had over \$30,000 of medical fees that needed to be paid.

When Gabie Richmond, Community Support Worker and the team at K'aute Pasifika heard about Ofa's situation, they were determined to help her.

Through advocating on Ofa's behalf, her medical debt has been paid through the generosity of the Red Cross. Gabie also worked together with Community Law to extend Ofa's visa another five months.

“ Being a mother myself, seeing her struggle with gestational diabetes complications, while also having to deal with the stress of huge medical expenses, and looking after her sick sister. I wanted to support her in whatever way I could.”

For Ofa the support she has received from Gabie and the team at K'aute Pasifika has lifted a huge weight off her shoulders.

“I was so thankful to the K'aute Pasifika team, because I was stuck here and I was worried about how I was going to take care of my baby.”







“ You have changed my life. If you did not help us I don't know how I was going to pay my medical bills. I want to say thank you so much for all you have done for us.”

## Honouring my mother's last wish

Our family's living situation really changed when Mum passed away from breast cancer in Fiji and Dad decided to retire in Australia.

In 2017 my husband, my two children and I moved back to Hamilton to look after my brother, to make sure he was alright. He was a young teenager and was on his own and I didn't want that to continue. When I came back to Hamilton we had to find a house and get settled.

“ K'aute Pasifika really supported me, providing our family with food vouchers which was amazing. I didn't have many appliances and they helped out tremendously. I was so grateful.

It didn't feel right to have my little brother live with extended family rather than me his only sister. Peace of mind is that Mum's last wish was to watch over my siblings, so I'm honouring her wish and memory by doing so. My brother came to live with me, and my other two brothers live with us now too.

“ K'aute Pasifika has had a huge impact on our lives. I was always ashamed about asking for help, but when I was really struggling, then I would ask.

My goal has always been to be stable and independent. It feels like I have made a lot of progress, thanks to Leinati helping me with goal planning.

I feel like Mum's gone and Dad's gone so the best thing is to have family around. To see my brothers on a daily basis is comforting. Every day I know where they are. My hope for the future is independence and space! Hopefully in the future my brothers will live on their own too.





*“ I wish I had sought help earlier but I guess it’s better late than never. I don’t think I would be where I am right now if I never came that day. I went from not being able to leave my room to moving to the other side of the country to follow my dreams. Sometimes all it takes is for someone to listen.”*

## Finding a safe place

The last straw for 23 year-old Juanita was after her Nan who she was very close to passed away, her ex-partner beat her again.

She made the brave and courageous first step to leave a violent relationship. it was then her journey of healing and recovery began.

“When I first got the phone call from the team at K’aute Pasifika, I didn’t know if I was going to show up, because I was afraid. I had never sought or received help before, so I didn’t know what to do. I showed up anyway and I’m so glad I did,” said Juanita.

The Social Services team including Alistair Wrampling, Community Support Worker and Uiliniitone Vaoesea, Social Worker worked intensively to support Juanita.

Uiliniitone supported Juanita to let go of her past and build her confidence.

“Uili opened up my eyes and made me realise that I need to keep going, and there’s a whole world out there. I cannot keep letting my past alter my future. I thank him from the bottom of my heart.”

“Acknowledging Juanita’s courage in seeking help, and reassuring her that she was in a safe place was important,” said Alistair.

For Juanita, the decision to leave her abusive partner and seek help has changed her life.

Juanita’s future is bright, she is on the road to recovery and has begun her new life in Nelson.







## K'aute Pasifika helped me believe in myself

Tevita born was born and raised in Tonga, he moved to NZ when he was 18 years old.

While studying at University Tevita, he realised it wasn't for him. He decided to find a job that would fulfil his passion of helping people in the community. Tevita heard about the Tupu Aotearoa and met with Helena Kaufononga, Employment Consultant.

**“** It's amazing because you finally realise there are people out there who will help you. When you feel down and don't believe in yourself they'll believe in you, that you can make it.”

Tupu Aotearoa is an employment, education and training service that ensures Pacific people have the right tools to succeed and thrive.

“We helped Tevita update his CV, learn job interview skills, get his driver's licence and find the right job for him. He worked hard and within two months he was offered a job,” said Helena.

Tevita has a job working at Hamilton Abuse Intervention Project. He supports perpetrators to change their behaviour and ensure they get access to support.

His advice for anyone looking for a job is to believe in yourself.

“I dropped out from High School when I was 10 years old and now I'm sitting behind a desk. Never in my life did I think I was going to work in an office.”

## Our dream of owning our own home becomes a reality

Elisapesi and her husband are proud parents of three children. Managing their day-to-day expenses including food, bills, family, church and community obligations is a challenge. Studying for her PHD full time, Elisapesi's husband is the only income earner.

“Sometimes I considered quitting my studies so I could work to help my husband. Our dream was to buy a home for our family, but we didn't know how this could happen with only one financial provider in the family. Also, we hardly made time to sit down to budget our money wisely.”

Elisapesi and her family were referred to the Whānau Ora programme.

“The Whānau Ora programme helped us in many ways. We were referred to a budget advisor and that is when we realised the importance of managing our money. The regular visits from the team have been so helpful encouraging us to focus. We tended to focus and prioritise other things in our family. The financial support that we received from Whānau Ora has been amazing. The help has made a huge difference to our lives.”

There were three priorities the family focused on. First was to purchase their own home, second for Elisapesi to complete her studies and get a job and lastly for their three children to succeed in their studies. Because of their



determination and saving they now have their own home. Elisapesi has completed her studies and handed in her PhD thesis during lockdown. She now teaches at the University of Waikato. Their eldest son is also attending the University of Waikato and studying Law.

**“** We are really happy. This has been a huge achievement of our family buying our first home last year. Our dream came true. What I thought to be impossible turned out to be possible! We believe that the assistance that we received from the Whānau Ora has played a huge part in this success.”



## OUR FUTURE

### All invited to have a say on new Pan Pacific Community Hub to support wellbeing of Waikato families

Over 250 people from the Waikato community attending our Pan Pacific Community Hub fono held in July at The Atrium, Wintec City Campus. Hosted with the help of our strategic partners Wintec and Hamilton City Council.

The purpose of the fono was to encourage people to have their say as to how the new Pan Pacific Community Hub can be set up to better support the holistic wellbeing of families in the Waikato.

“The hub has come from the people, is for the people and so it must be absolutely focused on the people. The Hub is about inclusion, ensuring the needs of the community are understood and met,” said Rachel.

A range of speakers who share the vision of the hub presented during the fono including Lale Ieremia, PCM Consulting, David Gibson, Chief Executive Creators and Christine Hall, Chief Executive of Ventures Ltd, Pinnacle.

The new hub in central Hamilton will be a first for New Zealand. Purpose-built, it will include an integrated health centre, and early childhood learning facility and an open fale-style community space for programmes as well as community and cultural events.

The integrated GP service and the early learning centre are being developed in partnership with Primary Health Care Limited and Creators Educational Trust.





## Pan Pacific Community Hub a step closer

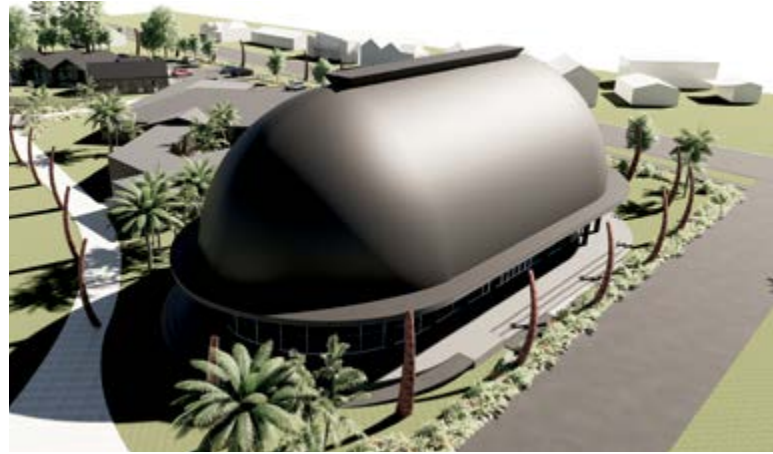
Our dream to build a new home for the Pacific community in Hamilton is one more step closer to reality, after Hamilton City Councillors voted unanimously to transfer ownership of the clubhouse building to K'aute Pasifika once the Trust has funding in place for the first stage of the Pan Pacific Community Hub.

Our plan is to create a \$10.6M multi-purpose community hub on the land, beginning with refurbishment of a former bowling clubhouse on the site.

Mayor of Hamilton Paula Southgate said "This project has had to fight very hard over 20 years to get to this point and those behind it have done an outstanding job. For K'aute Pasifika to win the unanimous support of all Councillors is a wonderful reflection on the depth of support for this project and how far this Council has come in this space. Now we just need central government to step up and do its part."

The Council also agreed to grant the Trust a 30-year lease on 0.8ha of Hinemoa Park land to build the hub.

The decisions clear the way for the next steps in the project, which was granted resource consent in October 2019, with initial funding pledged by Trust Waikato of \$2.1M. This is a milestone that has taken three years to get to,



after the council first supported our organisation as the lead applicant for the site in 2018.

Chief executive of K'aute Pasifika Rachel Karalus said "The new facility would be about bringing the walls down around the community, both physically and figuratively."

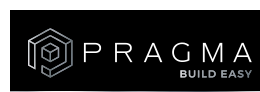
"This will be a model the rest of the country will want to replicate. People in Wellington are watching while we seize and create our own opportunities. The hub will bring people together without regard to gender, age, sexuality and even political views," said Rachel.





# THANK YOU!

We are truly grateful to our funders and partners for their continued support that enables us to serve our communities. Thank you.





## SUMMARISED FINANCIAL STATEMENT

The following statement is an excerpt from the financial statements audited by Mark Campbell of Campbell & Campbell Accounting Consultants, Hamilton. The audit report included the opinion that the financial statements showed a true and fair view.

### Statement of Comprehensive Revenue and Expenses K'aute Pasifika Trust For the 12 months ended 30 June 2020

	2020 12 months June \$	2019 15 months June \$
<b><u>Revenue</u></b>		
<b>Revenue from non-exchange transactions</b>		
Grant - Trust Waikato	48,877	59,000
Grant - Hamilton City Council	23,728	15,000
Grant - Lottery Waikato Community	31,000	66,500
Grant -WEL Energy Trust	40,000	-
Donations - Samoa Measle Fund	31,976	-
Other Grants and Donations	9,400	17,850
	184,981	158,350
<b>Revenue from exchange transactions</b>		
Contracted Income	3,975,811	3,666,976
Other Income	34,966	43,690
 Total Revenue from Exchange Transactions	 4,010,777	 3,710,666
<b>Total Revenue</b>	4,195,758	3,869,016
 <b><u>Expenses</u></b>		
Salaries and Wages	1,567,652	1,145,683
Other Operating Expenses	2,531,948	1,911,689
<b>Total Expense</b>	4,099,600	3,057,372
 <b>Net surplus/(deficit) for the period - before unspent funds</b>	 <b>96,158</b>	 <b>811,644</b>
Less Unspent Funding (accrual)	(116,543)	- 451,776
Plus Previous Unspent Funds Utilised	220,314	17,054
Plus Previous Unspent Funds - Earned and allocated to Pan Pacific Hub	-	217,382
Net surplus/(deficit) for the period before depreciation	199,929	594,304
Less: Depreciation - Expense	27,934	28,825
<b>Net surplus/(deficit) for the period</b>	<b>171,995</b>	<b>565,479</b>



# K'aute Pasifika

**PACIFIC. NEVER PASSIVE.**

K'aute Pasifika Trust  
Level 1 Citisite House  
960 Victoria Street  
Hamilton

Ph: 07 834 1482  
Fax: 07 839 9921  
[info@kautepasifika.co.nz](mailto:info@kautepasifika.co.nz)  
[www.kautepasifika.co.nz](http://www.kautepasifika.co.nz)

